

Brookline Preservation Commission

Demolition Application Report

Address: 50 Vernon Street
Applicant: RLAW, PC
Building Type: House (Partial)
National Register Listing (if Applicable): None



Historical/Architectural Significance:

The attached apartment building at 50 Vernon Street was built by Snider & Druker in 1911. In the late 19th and early 20th centuries, most of the residential development in the neighborhoods around Brookline Village was speculative, undertaken by professional men, real estate trusts, and local builders and developers. Snider & Druker were contractors with offices at 18 Tremont Street, Rm 501, Boston. This building was one of the later developments on Vernon Street, as it was located on a plot of land adjacent to the Tomas Howe estate, which was subdivided in 1887 and developed by 1894.

Snider & Druker hired Ralph G. Stebbins and Charles H. Watkins of Boston to design the apartment building at 50 Vernon Street. Stebbins graduated from MIT in 1906 and by 1909 he had joined Watkins, his uncle, as a partner in the firm Stebbins & Watkins. In the Boston area, the firm was responsible for a range of building types constructed in revival and industrial modern styles, including apartment blocks, single family homes, commercial and government buildings. In Brookline the firm designed the apartment block at 11-37 Claflin Road, McKenzie Engraving Company at 1010 Commonwealth Ave and the commercial block at 1016-1020 Commonwealth Ave.

The three story brick building features a yellow brick façade with stone lintels, quoins and water table. Treatment of windows on the façade varies. On the first floor, stone drip caps with modillions frame windows topped with stained glass transoms. The second floor features both flat and keystone lintels. At the cornice, raised parapets above the bays and entrances contain small carved geometric or floral designs. The arched hood above the door is supported by Tuscan columns, framing a wood and glass door with sidelights and a stained glass transom window. Originally designed as a three apartment building, in 1958 the third floor unit was subdivided into two four room apartments.

The building at 50 Vernon Street meets the following criteria for an initial determination of significance:

- c. The building is associated with one or more significant historic persons or events, or with the broad architectural, cultural, political, economic, or social history of the town or Commonwealth; and
- d. The building is historically or architecturally significant in terms of its period, style, method of construction, or its association with a significant architect or builder, either by itself or as part of a group of buildings.

The building at 50 Vernon Street retains integrity of location, design, setting, feeling, materials, and workmanship.



Aerial view of 50 Vernon Street, looking east.



Aerial view of 50 Vernon Street, looking north.



Aerial view of 50 Vernon Street, looking west.



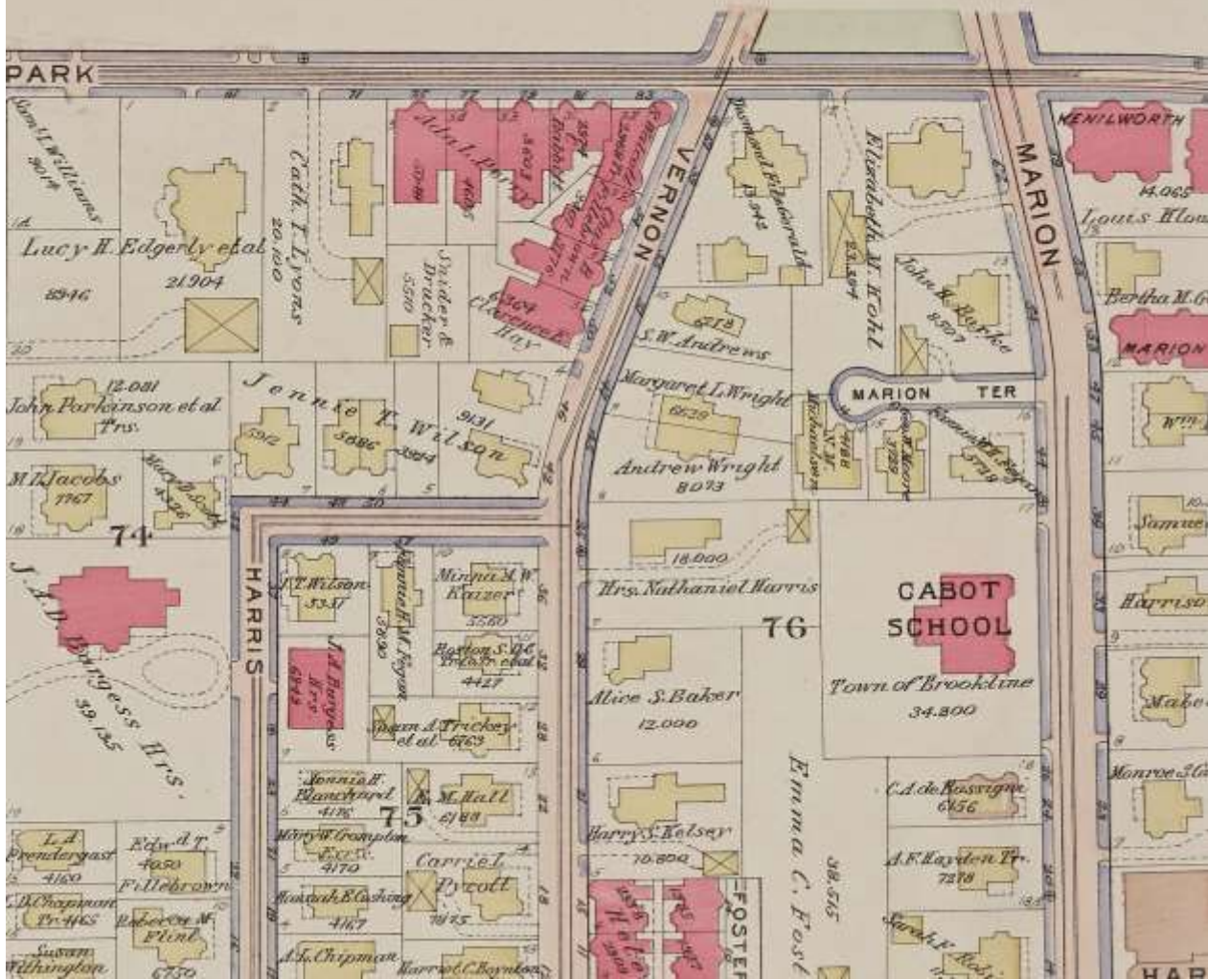
Aerial view of 50 Vernon Street, looking south.











Town of Brookline Atlas 1913