



Warrant Article 8: Round Down 4 Our Town

smart marijuana policy in brookline

Co-Petitioners


Susan Park TMM2 • Alok Somani AC • Cher Duffield TMM6 • Ana Albuquerque TMM1 •
Regina Frawley TMM16 • Faith Michaels TMM5 • Bruce Levin



BACKGROUND

Current town by-law 8.37.4 provides for four types of marijuana licenses:

- (a) storefront
- (b) delivery operators
- (c) social-consumption
- (d) couriers

- 
- Licenses in each category are capped at 20% of the number of off-premises liquor licenses issued by the town.
 - When the calculation yields a fraction, the requirement is to round **up**.

NOTE: All fractions round up, **EVEN** when below one half. So 3.2 rounds **UP to 4**, not **DOWN to 3**.



Example

- Currently, Brookline has issued 19 off-premises liquor licenses.
- 20% of 19 is 3.8.
- The town rounds **up**, offering 4 licenses in each category.



WARRANT ARTICLE 8

Section 8.37.4 CAPS ON THE NUMBER OF SELECT BOARD LICENSES FOR MARIJUANA RETAILERS

The Select Board shall not issue more Marijuana Establishment licenses in each of the following categories of Marijuana Establishment licenses than the number that is 20% of the number of liquor licenses for off-premises alcohol consumption that have been issued by the Select Board pursuant to M.G.L. c. 138, § 15, ~~as rounded up to the nearest whole number in the event the number is a fraction~~: a) Storefront Marijuana Retailers, b) Marijuana Delivery Operators, c) Social Consumption Marijuana Retailers, and d) Marijuana Couriers.

In the event that 20% of the number of off-premises liquor licenses is a fraction, the fraction shall be rounded down.

This Section 8.37.4, as amended, shall not affect the validity of licenses outstanding as of its effective date under State law, including Massachusetts General Laws Chapter 94G, Sections 3(a)(2)(ii) and 3(e).



Effect of Rounding on Number of Licenses (per category)

Liquor Licenses	Cannabis Licenses (per category)	Round UP	vs	Round DOWN
19	3.8	4		3*
20	4	-		-
21	4.2	5		4
24	4.8	5		4

*Grandfathered licenses remain at 4.



WARRANT ARTICLE 8: Path to Success





WHY WARRANT ARTICLE 8?

- 1. Our Children and Cannabis: Risky Business**
- 2. Voter Confusion**
- 3. Offset to Warrant Article 7**
- 4. Protect Our Most Vulnerable**
- 5. Intentional Policymaking: We Deserve Better**



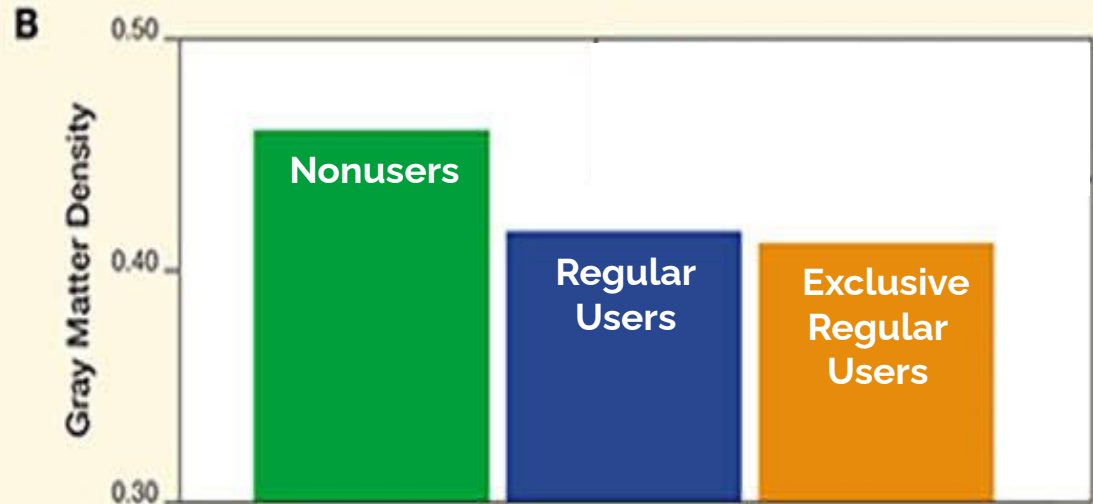
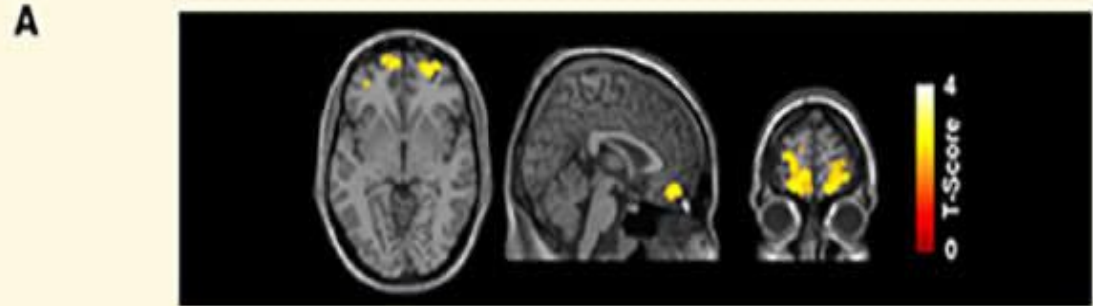
1. Our Children and Cannabis: Risky Business

- Jan. '21 JAMA study links cannabis use to self harm & mortality.¹
- Jun. '21 NIH study shows suicidal ideation in young adults.²
- Sep. '21 CNN article reports alarming rise in cannabis hyperemesis syndrome (CHS)—or chronic, uncontrolled vomiting—among cannibals users.³
- Data lags. A host of other concerning health risks are already beginning to emerge, but it will be years before we fully understand the risk associated with marijuana use.

Effect of Cannabis on Grey Matter ⁴

Grey matter regulates:

- muscle control
- sensory perception
- memory
- emotions
- speech
- decision making
- self control





B-PEN Weighs In

- Reduced risk perception +
Increased access =
Increased underage use
- Jan '21 RAND study says more cannabis stores and advertising will increase usage among youths.^{[5](#)}

What's this? . . .





... NETA Targeting the Youth Market!

NETA has partnered with music sensation Justin Bieber to sell their exclusive line of “Peaches” pre-rolled joints, named after the megastar’s latest hit single.



Protect Our Children

- Brookline already has 4 stores and 8 delivery licenses.
- More shops = greater access for Brookline youth.
- WA 8 helps us protect our children.



2. Voter Confusion

- When Brookline residents voted to legalize marijuana in 2016, many were unaware that they were also voting to authorize retail sales in our town and near our schools.
- They didn't understand just how many licenses would be issued.
- WA 8 lets voters return to the polls and make an **informed** decision.



3. Offset to Warrant Article 7

- The Select Board's WA 7 creates 2 more storefront licenses—reserved specifically for “social-equity” applicants—on top of the 4 storefront and 8 delivery licenses already issued.
- WA 7 increases the number of storefront businesses in town to **50% over the legal cap.**

It's social justice built on the backs of our children.

- WA 8 works to help offset this gain.



4. **Protect Our Most Vulnerable**

- Social-justice claims are proving to be a false narrative.⁶
- A recent study shows that cannabis use disproportionately harms mixed race, black, and indigenous populations.⁷
- Rounding up and “equity” licenses create increased access, actually putting our most vulnerable populations—including our children—at risk.



5. Intentional Policymaking: We Deserve Better

Matt Giancola, Director of Government Affairs for the state's Cannabis Control Commission admits:

The legislative decision to round **up** represents little more than a convenience—an attempt to avoid the town-wide vote needed to round **down**.

We can do better.



CONCLUSION

We acknowledge the fact that Brookline has welcomed the marijuana industry into our town.

Warrant Article 8 seeks not to impede that industry, but simply to better scale its footprint to the diverse needs and wants of our community.



PLEASE VOTE:

NO on **WA 7** - 2 new storefronts


YES on **WA 8** - round down

YES on **WA 9** - study committee



REFERENCES

1. Fontanella, C. A., Steelesmith, D. L., Brock, G., Bridge, J. A., Campo, J. V., Fristad, M. A. (2021). [Association of Cannabis Use With Self-harm and Mortality Risk Among Youths With Mood Disorders](https://doi.org/10.1001/jamapediatrics.2020.5494). *JAMA Pediatrics*, 175(4), 377–384. <https://doi.org/10.1001/jamapediatrics.2020.5494>
2. Han, B., Compton, W. M., Einstein, E. B., Volkow, N. D. (2021). [Associations of Suicidality Trends With Cannabis Use as a Function of Sex and Depression Status](https://doi.org/10.1001/jamanetworkopen.2021.13025). *JAMA Network Open*, 4(6), e2113025. <https://doi.org/10.1001/jamanetworkopen.2021.13025>
3. LaMotte, Sandee. “[Uncontrollable vomiting due to marijuana use on rise, study finds](https://www.cnn.com/2021/09/17/health/marijuana-vomiting-wellness/index.html).” *CNN.com*, 17 Sep 2021, <https://www.cnn.com/2021/09/17/health/marijuana-vomiting-wellness/index.html>. Accessed 17 Oct 2021.
4. Filbey, F. M., Aslan, S., Calhoun, V. D., Spence, J. S., Damaraju, E., Caprihan, A., Segall, J. (2014). [Long-Term Effects of Marijuana Use On the Brain](https://doi.org/10.1073/pnas.1415297111). *Proceedings of the National Academy of Sciences of the United States of America*, 111(47), 16913–16918. <https://doi.org/10.1073/pnas.1415297111>

- 
5. D'Amico, E. J., Rodriguez, A., Tucker, J. S., Pedersen, E. R., Shih, R. A. (2018). [Planting the seed for marijuana use: Changes in exposure to medical marijuana advertising and subsequent adolescent marijuana use, cognitions, and consequences over seven years.](https://doi.org/10.1016/j.drugalcdep.2018.03.031) *Drug and Alcohol Dependence*, 188, 385-391.
<https://doi.org/10.1016/j.drugalcdep.2018.03.031>
 6. “[Marijuana and Social Justice: Will Commercialization Deliver Social Justice?](https://learnaboutsam.org/marijuana-and-social-justice/)” SAM: Smart Approaches to Marijuana, <https://learnaboutsam.org/marijuana-and-social-justice/>. Accessed 17 Oct 2021.
 7. Gorelick, D.A. (2021). [Cannabis use: Epidemiology, pharmacology, comorbidities, and adverse effects.](https://www.uptodate.com/contents/cannabis-use-epidemiology-pharmacology-comorbidities-and-adverse-effects#H2640449534) *UpToDate*, <https://www.uptodate.com/contents/cannabis-use-epidemiology-pharmacology-comorbidities-and-adverse-effects#H2640449534>. Accessed 17 Oct 2021.